



See Japan by Land & Sea!
 Enjoy the *Colorful Fall Foliage!*

2022 IMMERSIVE JAPAN & KOREA CRUISE

*Featuring Hakodate, Otaru, Kanazawa, Busan, Nagasaki,
 Kagoshima, Osaka & Shimizu Plus Niigata, Sado Island,
 Nagano & Tokyo Shopping*

**12 Night Premium Cruise Plus 1 Night Pre-Cruise & 6 Nights Post-Cruise
 Hotel Stay with Included Sightseeing and Meals**

19 Nights / 21 Days • Escorted from Honolulu • Norwegian Sun
 Sail Roundtrip from Tokyo (Yokohama), Japan
October 25 – November 14, 2022

PRE & POST CRUISE HIGHLIGHTS:

Sankeien Garden • Cup Noodle Museum • Minato Mirai 21 Shopping • Yokohama Chinatown
 JR Super Express Train • Northern Culture Museum • Geiko Dinner • Jet Foil Ride to Sado Island
 Sado Gold Mine • Oni-Daiko (Demon Drum) Performance • Obata Sake Brewery
 Tarai-Bune (Bathtub) Boat Ride • Shukunegi • Japanese Crested Ibis Conservation Centre
 Jet Foil Ride to Niigata Port • Jigokudani Snow Monkey Park • Zenkoji Temple
 Sake Brewery Nishinomom Yoshinoya • Daio Wasabi Farm • Matsumoto Castle • Narai-juku
 Asakusa Sensoji Temple • Nakamise Shopping • Tsukiji Outer Market • Ameyoko Shopping

HANDS-ON ACTIVITIES:

Soba Noodle Making • Sake Brewery Tour and Tasting • Practice Shakyo (Tracing Sutras)

CRUISE HIGHLIGHTS:

Hakodate, Japan • Otaru (Sapporo), Japan • Kanazawa, Japan • Busan, South Korea
 Nagasaki, Japan • Kagoshima, Japan • Osaka (Kyoto), Japan • Shimizu (Mt. Fuji), Japan

YOUR ESCORTED CRUISE TOUR INCLUDES:

Roundtrip Airfare from Honolulu, 1 Night Pre-Cruise and 6 Nights Post-Cruise Hotel Stay,
 Sightseeing as Indicated on the Itinerary, 12 Night Premium Cruise Ship Accommodations,
 Unlimited Shipboard Gourmet Dining, Nightly Shipboard Entertainment,
 24 Hour Room Service, All Transfers, Taxes & Fees

**Non-Stop Travel
 Exclusive!**

DON'T MISS A THING!!
WHISPER — Wireless Tour Guide System!
 English narration directly to your ear!



Locally Owned & Operated Since 1985 — Mahalo Hawai'i!

615 Piikoi Street, Suite 102 • Honolulu, Hawai'i 96814

593-0700 or Toll-Free 1-800-551-1226

www.nonstop.travel

**COMPLETE
 PACKAGES!**
FROM \$6518*

INCLUDES ROUNDTRIP AIRFARE FROM
 HONOLULU, 12 NIGHT PREMIUM CRUISE,
 HOTELS, SIGHTSEEING AS INDICATED ON THE
 FLYER, AND ALL TRANSFERS, TAXES & FEES

**EARLY BOOKING DISCOUNTS
 PER PERSON**

Book by 11/30/21 & **SAVE \$100†**
 Book by 01/31/22 & **SAVE \$75†**
 Book by 03/31/22 & **SAVE \$50†**

**EXCLUSIVE BONUS!
 ONLY FROM NON-STOP TRAVEL!**

- Hosted Pre-Cruise Luncheon
- Hosted Shipboard Private Cocktail Party

Exclusive Bonuses!

**Book Today & Receive
 Complimentary Amenities**

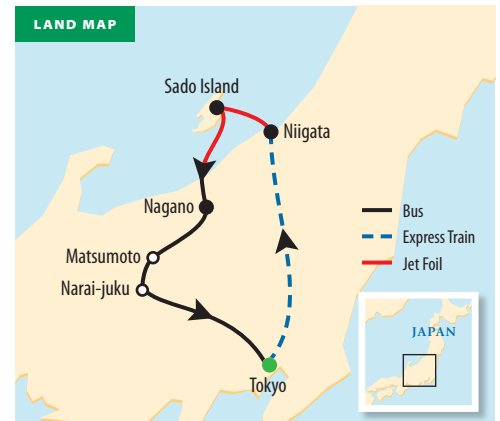
Studio and Inside Cabins choose 2 amenities
 & Ocean View Cabins and above cabins receive
 all 4 amenities (a value up to \$3,649 per stateroom):

- **Premium Beverage Package[^]**
 (gratuity of \$237.60 per person not included)
- **4 Meal Ultimate Dining Package[^]**
 (gratuity of \$22.80 per person not included)
- **250 Minute Internet Package**
- **\$50 Shore Excursion Credit Per Port**

* Fares are per person, USD based on double occupancy and INCLUDE ALL AIRLINE & CRUISELINE TAXES AND FEES. Cruise line and airline fuel supplements, taxes and fees are subject to change and tour member is responsible for any increases. Some airline-imposed personal charges, including but not limited to baggage, priority boarding and special seating, may apply. For details visit www.TripAdvisor.com/AirlineFees. After initial deposit, a \$75 per person Non-Stop Travel (NST) Cancellation Fee will apply. Group departures may be cancelled, if there are less than 24 tour members. Final Payment to NST for "non-cruise line" Air and Land Package must be made by Money Order or Personal Check. NST does not guarantee that all tour members will fly together with Tour Manager. Tour Manager assignments, number of meals offered on tour, tour price, discount, and the "final" tour itinerary are subject to change with/without notice. **NST reserves the right to correct errors or omissions including but not limited to, fares, fees and surcharges at any time.** † Early Booking Discount is per person. Purchase of Non-Stop Travel's complete Air and Land Package is required. † Gratuity is not included for optional shore excursions, shipboard personnel and your Tour Manager. ^ Exclusive Bonus amenities are per stateroom, with the exception of the Premium Beverage and Ultimate Dining Packages, which apply to passengers 1 and 2 in the stateroom only. Premium Beverage Package will be substituted with a Soda Package for passengers under 21 years of age. Bonus amenities may be purchased for additional passengers in the stateroom for an additional fee. Beverage and Dining Package gratuities are not included and passengers must pay for the gratuities with final payment. Subject to change at any time with/without notice. †† Earn Rewards Every Time You Refer a Friend. For each "New-to-NonStop Travel" customer you refer, both you and your referral can receive a \$25 discount off your next NST escorted group. • FREQUENT CRUISER REWARDS — A reward certificate equal to 3% of the value of your current cruise fare (excluding airfare, NCF, taxes, fuel surcharges and fees) will be automatically sent to you upon completion of your current trip. Certificate is redeemable towards the final payment balance of your next trip. Reservation and deposit for your next trip must be made within one year of the issuance of your Frequent Cruiser Rewards certificate. • Special Assistance: You must notify NST, at time of reservation, of any disability requiring special attention. NST reserves the right to cancel your booking or terminate your vacation if your special needs or disabilities are not suitable for the vacation or if you are not traveling with a companion who will provide all the assistance you require. Wheelchair and Electric Scooter access outside of the USA is severely restricted. 100821



CATEGORY	ALL-INCLUSIVE FARE
IB – Inside For, Mid or Aft	\$6,518
IA – Inside For, Mid or Aft	\$6,538
OC – Ocean View For or Mid	\$6,635
OB – Ocean View For	CALL
BB – Balcony For, Mid or Aft	\$7,551
BA – Balcony For, Mid or Aft	\$7,569
Final Payment Due	05/27/22
Cruise Deposit: \$250 per person • Air & Land Deposit: \$500 per person	



Sightseeing in each port is NOT included. Shore excursions are available for purchase through Norwegian Cruise Line or Non-Stop Travel.

Day 1: Tue, Oct 25 – HONOLULU. Depart Honolulu.

Day 2: Wed, Oct 26 – TOKYO. Arrive Tokyo. After entry formalities, transfer by coach to hotel in Tokyo. KEIO PLAZA HOTEL TOKYO (1 Night)

Day 3: Thur, Oct 27 – TOKYO – YOKOHAMA – EMBARK NORWEGIAN SUN. After a delicious breakfast at the hotel, depart the hotel for Yokohama. We start our day visiting **Sankeien Garden** – a spacious Japanese-style garden in southern Yokohama which exhibits a number of historic buildings from across Japan. There is a pond, small rivers, flowers and wonderful strolling trails that make you think you are in Kyoto rather than Yokohama. Next, explore the **Cup Noodle Museum** and learn about the history of this dorm room favorite of students worldwide. Before lunch, spend some free time shopping and exploring **“Minato Mirai 21,”** a seaside urban area in central Yokohama whose name means “harbor of the future.” It has many large high rises, including Japan’s tallest building, the Landmark Tower. Enjoy lunch in **Yokohama’s Chinatown** before transferring to the pier for embarkation on the Norwegian Sun. (B, L, D)

Day 4: Fri, Oct 28 – AT SEA. (B, L, D)

Day 5: Sat, Oct 29 – HAKODATE, JAPAN. 7:00 am – 5:00 pm. (B, L, D)

Day 6: Sun, Oct 30 – OTARU (SAPPORO), JAPAN. 8:00 am – 4:00 pm. (B, L, D)

Day 7: Mon, Oct 31 – AT SEA. (B, L, D)

Day 8: Tue, Nov 01 – KANAZAWA, JAPAN. 6:00 am – 4:00 pm. (B, L, D)

Day 9: Wed, Nov 02 – BUSAN, SOUTH KOREA. 3:00 pm – 10:00 pm. (B, L, D)

Day 10: Thur, Nov 03 – NAGASAKI, JAPAN. 9:00 am – 7:00 pm. (B, L, D)

Day 11: Fri, Nov 04 – KAGOSHIMA, JAPAN. 6:00 am – 2:00 pm. (B, L, D)

Day 12: Sat, Nov 05 – OSAKA (KYOTO), JAPAN. 11:00 am – Overnight in Port. (B, L, D)

Day 13: Sun, Nov 06 – OSAKA (KYOTO), JAPAN. Depart 5:00 pm. (B, L, D)

Day 14: Mon, Nov 07 – SHIMIZU (MT. FUJI), JAPAN. 10:00 am – 7:00 pm. (B, L, D)

Day 15: Tue, Nov 08 – YOKOHAMA – DISEMBARK NORWEGIAN SUN – NIIGATA. After disembarkation, transfer by motorcoach to the Shin-Yokohama station. Take the **JR Super Express Train** to Tokyo and then Niigata. Upon arrival in Niigata, visit the **Northern Culture Museum**. Originally serving as a mansion of Ito Bunkichi, who lived in the Edo Period (1603–1868) and was one of the greatest landowners in Japan, nowadays, the museum houses calligraphy and ceramics, lacquer ware and documents related to Ito’s family history. You can also visit the garden; it is a “walking” garden with a big pond. You’re in for treat this evening!! Along with dinner, we are **entertained by an authentic Geiko**. Dancing, singing, and playing fun games. HOTEL NIKKO NIIGATA (1 Night) (B, D)

Day 16: Wed, Nov 09 – NIIGATA – SADO ISLAND. Transfer to Niigata Port. Take a **jet foil to Sado Island**. After lunch, visit the **Sado Gold Mine**. Tonight, a special **Kaiseki Dinner** will be served at your hotel accompanied by an authentic **“Oni-Daiko (Demon Drums) Performance**. HOTEL YAHATAKAN (2 Nights) (B, L, D)

Day 17: Thur, Nov 10 – SADO ISLAND. This morning, visit the **Obata Sake Brewery** for a **tour and tasting of their products**. Then **make your own soba noodles** and eat your delicious creation for lunch. After lunch, take a traditional **“Tarai-Bune” boat ride**. The tarai-bune tub boats floating along the Ogi coastline are considered the symbol of Ogi. These boats are constructed out of cedar wrapped with bamboo on the outside, with a diameter of about 150 cm. Developed and used during Edo and Meiji periods, the tarai-bune tub boats, mainly operated by women, were ideal for tight turn and stability amidst the abundant reefs and coves along the Ogi Peninsula. These boats were originally used for collecting shellfish and seaweed from around the coast. Later, visit the charming fishing village of **Shukunegi**. The entire village is designated as a “National Historic Site.” Take a stroll along the narrow streets of Shukunegi Village to feel the history and experience the living conditions of people living during the Edo period. As this area was previously a trading port for ships going to Edo (Tokyo) and Osaka, many who lived here were ship carpenters and sailors. Here, you will be able to find the popular *sankaku-ya* which is a triangle-shaped house, built to fit the shape of the land available at that period of time. Return to the hotel for a brief rest before dinner. Enjoy dinner at La Plage, a local restaurant. (B, L, D)

Day 18: Fri, Nov 11 – SADO ISLAND – NAGANO. Take a tour of **Japanese Crested Ibis Conservation Centre** this morning, before transferring to Ogi Port. Take a **jet foil to Niigata port**. Transfer to Nagano. Upon arrival in Nagano, transfer to the hotel, where the remainder of the day is at your leisure. HOTEL METROPOLITAN NAGANO (2 Nights) (B, D)

Day 19: Sat, Nov 12 – NAGANO. After breakfast, visit the **Jigokudani Snow Monkey Park**, home to a very special troop of monkeys. Created in 1964, the park was established as a conservation area in which these monkeys – Japanese macaques – would have a refuge within what was already their natural habitat. The Monkey Park is a unique place where you can observe the wild monkeys going about their daily lives including the unique behavior of bathing in onsens (natural hot springs). They are the only troop known to do so, something that entered the global consciousness in 1970 when *LIFE* magazine profiled the bathing monkeys on its cover. Since that time, visitors from around the world have been coming to the park to spend time with the famous snow monkeys of Jigokudani. Then take a tour of Nagano’s **Zenkoji Temple**, one of the most important and popular temples in Japan. Founded in the 7th century, it stores the first Buddhist statue ever to be brought into Japan when Buddhism was first introduced in the 6th century. Next, **practice the art of Shakyō**, the tracing of the sutras. While the Buddhist practice of Shakyō was originally a means of spreading the Buddha Way, today people practice shakyō to reflect on themselves or to attain mental well-being and

peace. **Take a tour of a Sake Brewery Nishinomoto Yoshinoya** and **taste some of their tasty products**. Return to the hotel for an afternoon of leisure. For dinner tonight, you’re in for a real treat! Dine at Fujiya Gohonjin, a favorite of prominent local figures and celebrities for more than 300 years. While the outside of the building reflects western Art Deco, you’ll feel like you’ve stepped back in time, to the atmosphere and culture of the Taisho period, when you enter the building. With service spanning the Meiji, Taisho, and Showa periods, “Fujiya” continues to provide the highest level of customer care originally lavished on Daimyo Lords of the Edo era. Experience this level of service first hand at dinner. After dinner, return to the hotel for the evening. (B, D)

Day 20: Sun, Nov 13 – NAGANO – MATSUMOTO – NARAI-JUKU – TOKYO. Begin the day with a visit to **Daio Wasabi Farm**, one of the country’s largest wasabi farm. The farm has multiple large fields with a network of small streams, that provide clear, flowing water from the Northern Alps. Only under such pristine conditions is wasabi cultivation possible. A wide variety of wasabi related products are available. Ever wondered what wasabi ice cream or wasabi beer taste like? Next, visit the **Matsumoto Castle**, one of Japan’s premier historic castles. Also known as “Crow Castle” due to its black exterior, Matsumoto Castle is unique for having both a secondary donjon and a turret adjoined to its main keep. After lunch, depart Matsumoto for Tokyo. Enroute, stop at **Narai-juku**, which will give you a feeling of Japan’s olden days. Enjoy a stroll down the charming streets with its samurai-era atmosphere. Take a sip of pure spring water from a roadside wells called *mizuba*. The evening is free for you to explore Tokyo on your own. KEIO PLAZA HOTEL TOKYO (1 Night) (B, L)

Day 21: Mon, Nov 14 – TOKYO – HONOLULU. After breakfast, begin the day with a visit to **Asakusa**, the center of Tokyo’s *shitamachi* (literally “low city”) districts, where an atmosphere of the Tokyo of past decades survives. Asakusa’s main attraction is **Sensoji**, a very popular Buddhist temple built in the 7th century. The temple is approached via the *Nakamise*, a shopping street that has been providing temple visitors with a variety of traditional local snacks and tourist souvenirs for centuries. Enjoy time for lunch (on your own) and shopping at **Tsukiji Outer Market**. Although the Inner Market (and live auctions) have relocated, the Outer Market remains – full of a mixture of wholesale and retail shops along with numerous restaurants. Seafood fresh from the auction block are available for purchase. Lastly, visit **Ameyoko**, a busy market street along the Yamanote Line tracks between Okachimachi and Ueno Stations. The name “Ameyoko” is a short form for “Ameya Yokocho” (candy store alley), as candies were traditionally sold there. Alternatively, “Ame” also stands for “America”, because a lot of American products used to be available there when the street was the site of a black market in the years following World War II. Today, various products such as clothes, bags, cosmetics, fresh fish, dried food, and spices are sold along Ameyoko. Transfer to the airport for the flight home. Depart Tokyo and arrive Honolulu the same day. Aloha and Welcome Home! (B)

Note: Tour Itinerary is subject to change at any time with/without notice.